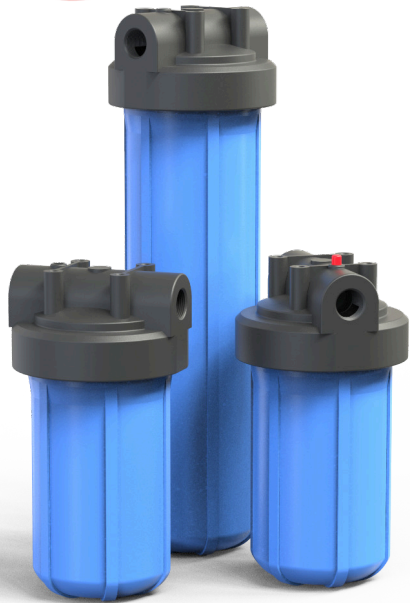


Cartridge filter housing Big Blue

Technical changes reserved | Rev.: 002.24.01



[-> to the product](#)



Big Blue Clear are 2-part plastic housings for standard filter elements (DOE) open on both sides. In addition to standard elements, special BB elements can also be used with outer diameters up to 114 mm.

Inlet and outlet are arranged opposite each other in the filter head. The head and the lower part of the housing are connected to each other by a screw connection.

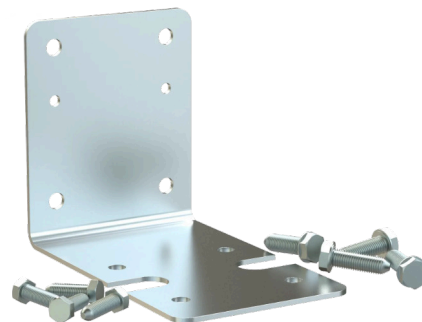
Accessories include brackets for wall mounting and a mounting key for easier opening and closing of the housing.

Available accessories

- Big Blue wrench



- Big Blue mounting bracket



Technical data

Material:	Polypropylene
In-/ outlet:	1" BSPP or 1 1/2" BSPP female thread
Working pressure:	10" max. 6,9 bar at 37,8°C 20" max. 6,2 bar at 37,8°C
Working temperature:	max. 50°C at 3 bar
Flow rate:	Up to 6 m ³ /h *
Gaskets:	NBR (others on demand)

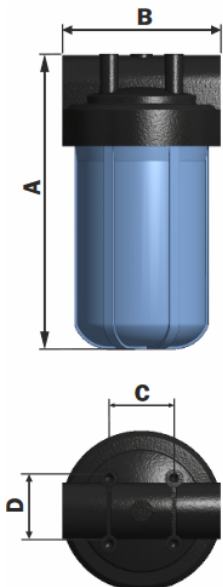
*dependent on the connections as well as the micron rating

Applications

- Pre- and fine filtration in water treatment
- Electronic- and photo industry
- Chemical applications
- Surface technology

Dimensions

Type	A	B	C	D
10-1	338	185	75	76
10-1 1/2	342			
20-1	590			
20-1 1/2	603			



Order information

Big Blue-	<input type="text"/>	-	<input type="text"/>	
	Length element		In-/ outlet	
	10	10"	1	1"
	20	20"	1 1/2	1 1/2"

Order example: Big Blue-10-1 1/2